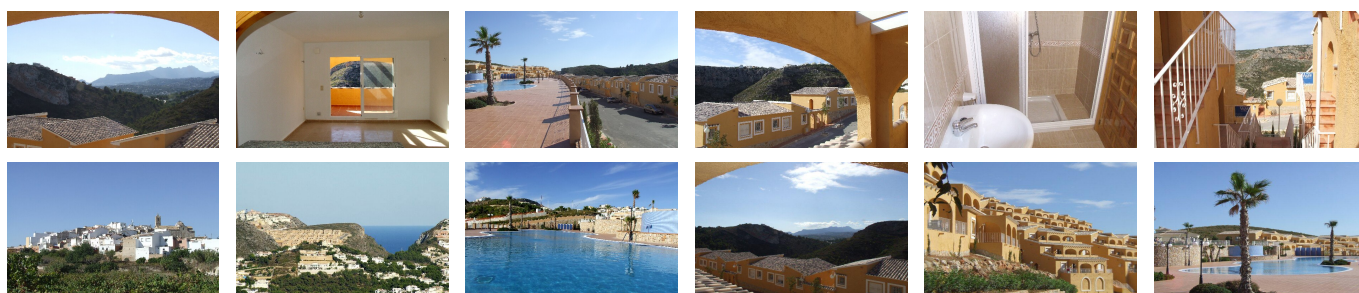


Ref: WW688

119,000 €



Price: 119,000 €

Ref: WW688

- Build size: 93 m2
- Plot size: 0 m2
- 2 bedrooms
- 2 bathrooms
- Communal pool
- 3 km from beach
- 3 km from town
- Urbanisation: Cumbre del Sol

NEW APARTMENT, READY TO MOVE INTO

Apartment for sale in Benitachell. No need to wait for a new Monte Cala. Finished two-bedroom apartment, ready to move into and cheaper than the new ones. Fantastic communal pool and gardens with pool bar. Secluded in the hills above Moraira (15 minutes' drive) with stunning immediate views to the verdant valley and mountains. Large living room with fully-fitted and equipped open kitchen, two bedrooms, shower room. Good letting potential. One of three apartments in the same ownership. Offers invited for all three.