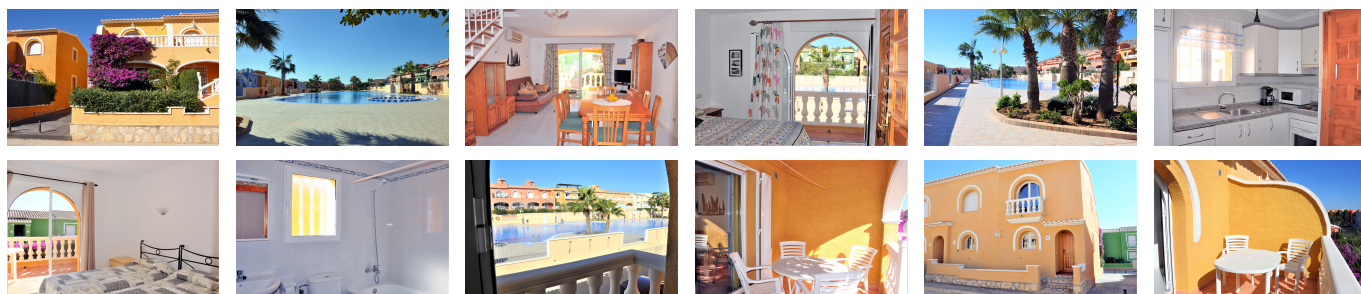


Ref: WW2041E

115,000 €



Price: 115,000 €

Ref: WW2041E

- Build size: 83 m2
- Plot size: 0 m2
- 2 bedrooms
- 1 bathroom
- Communal pool
- 1.8 km from beach
- 4.4 km from town
- Urbanisation: La Cumbre del Sol

IMMACULATE SEMI DETACHED TWO BEDROOM DUPLEX

Town house for sale in Benitachell. The first and sole Swedish owners have maintained this duplex fantastically. Straight in to the house from street level. A separate kitchen, lounge and dining room. A covered terrace with a few steps down to the little garden. Internal staircase up to two bedrooms with a spacious bathroom in the middle. Off the master bedroom is a spacious open terrace. A view over the fantastic and unique community pool from the second bedroom. The duplex is sold fully furnished and is just ready to move in to. Paddle and tennis courts, restaurants and a supermarket are all within walking distance. A real bargain.

Calle Iglesia 7, 03724 Moraira (Alicante), España

Phone: +34 966 492 222 Mobile: +34 679 667 626 Email: info@watkinswilson.com