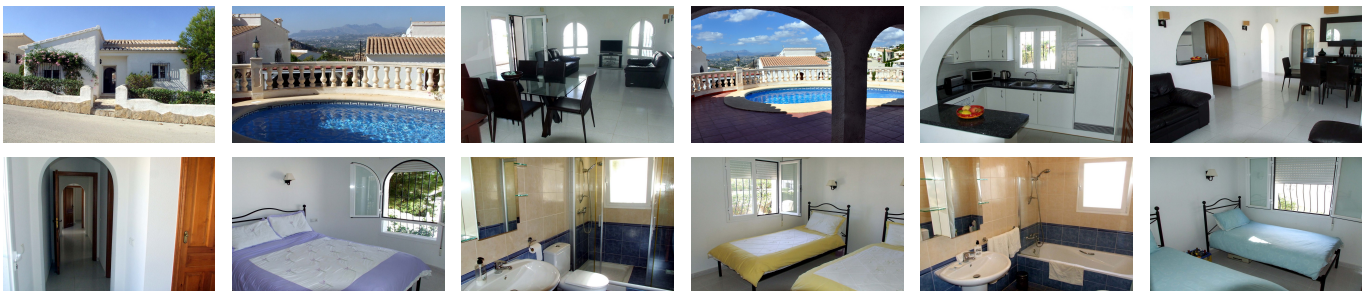


Ref: WW2028E

199,000 €



Price: 199,000 €

PALMERAS
Ref: WW2028E

- Build size: 105 m2
- Plot size: 450 m2
- 3 bedrooms
- 2 bathrooms
- Private pool
- Zone: Palmeras
- Urbanisation: La Cumbre del Sol

EXQUISITE THREE BEDROOM, TWO BATHROOM DETACHED VILLA AT

Villa for sale in Benitachell. An immaculate single storey villa on a small plot with its own swimming pool at Palmeras on Urbanisation Cumbre del Sol close to Moraira.

This is a large multinational urbanisation with many different types of property ranging from small apartments to multi million Euro villas. There are wide roads, pavements and street lighting throughout. Cumbre del Sol, (the Summit of the Sun) has its own delightful beach, a large supermarket and bars and restaurants. It is also just a ten minute drive to both Moraira and Jávea or five minutes to the closest village of Benitachell. Level entrance to the entrance hall into the living-dining room with an arch and breakfast bar to the superbly equipped kitchen with a pantry. Double doors lead out to a small open naya overlooking the pool with distant views to the Sierra Bernia mountain range in the west. Through an archway to an inner hallway with a shower room and all three bedrooms off it; one of these has an en-suite bathroom as well as double doors on to the pool terrace. All three of the bedrooms have hot and cold air conditioning, as does the living-dining room.

Calle Iglesia 7, 03724 Moraira (Alicante), España

Phone: +34 966 492 222 Mobile: +34 679 667 626 Email: info@watkinswilson.com