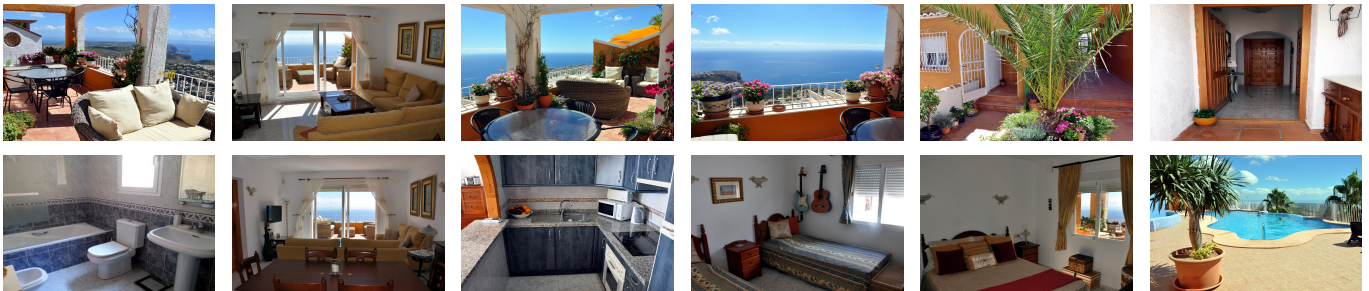


Ref: WW2013E

139,500 €



Price: 139,500 €

Ref: WW2013E

- Build size: 98 m2
- Plot size: 0 m2
- 2 bedrooms
- 1 bathroom
- Communal pool
- Urbanisation: La Cumbre del Sol

AMAZING SEA VIEWS FROM PUEBLO PANORAMA

Apartment for sale in Benitachell. An immaculate, two bedroom pueblo style apartment with a large south facing terrace with close sea views from Moraira to Jávea. This is one of the uppermost apartments in the block approached from the parking above with just a few steps down to the entrance porch. Inner hallway with three store cupboards, one of which houses the washing machine. The bathroom with a bath and a shower within enjoys natural light and ventilation from the window. Rectangular living dining room with the fantastic sea views and two double bedrooms off. The front bedroom also has the sea views. An open kitchen with breakfast bar also enjoys the sea views. The spacious terrace runs the full width of the apartment with an open sun bathing area and a shaded part with a pergola for al fresco dining. The two spectacular infinity swimming pools are only a 50 metre level walk away. The pools are on different levels with a cascade between them. Satellite television, hot and cold air conditioning and double glazing. An excellent apartment in very good decorative order.

Calle Iglesia 7, 03724 Moraira (Alicante), España

Phone: +34 966 492 222 Mobile: +34 679 667 626 Email: info@watkinswilson.com